

Drought

Excessive Cold

Tropical

Severe T-storms

Heavy Rain

Winds

Heavy Snow

Excessive Heat

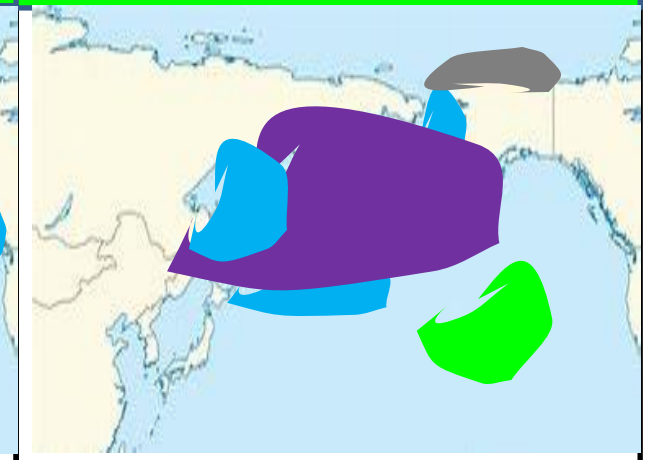
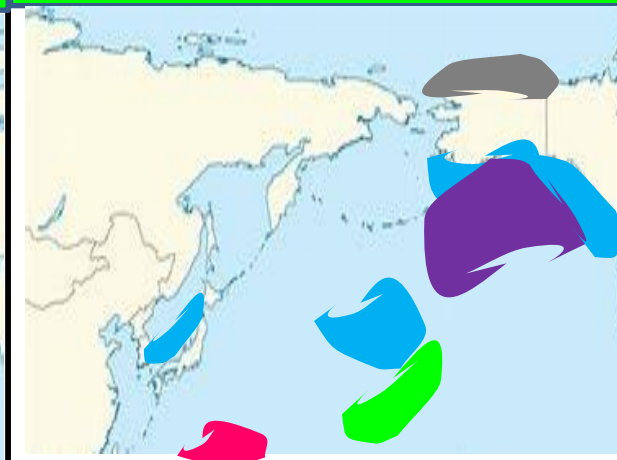
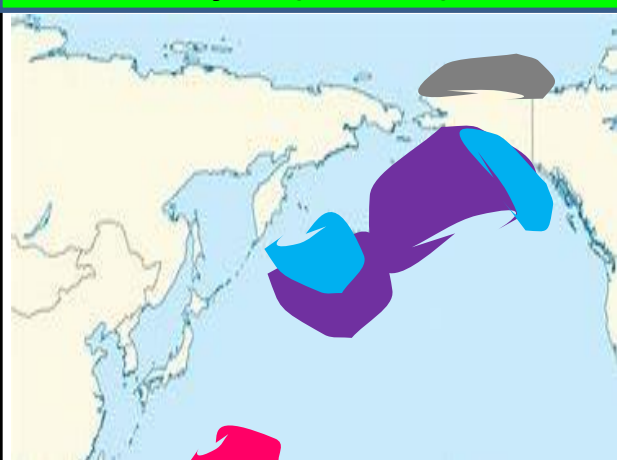
Ice

Notes: Heavy rain is 2inches or greater.  
Heavy Snowfall is 6inches or greater.  
Winds over 40mph sustained  
Heat over 90F. Cold 0F and below.  
Ice: over .05inches

## Day 2: (Dec 15)

## Day 3: (Dec 16)

## Day 4: (Dec 17)



WINDS: 45-60mph over the Gulf of Alaska.

COLD: Temps in the -20s over the Northern Slope.

HEAVY SNOW: 6-10in totals over parts of the North Pacific and Gulf of Alaska.

TROPICS: Tropical wave near Guam.

WINDS: 40-60mph over the Gulf of Alaska.

HEAVY SNOW: 6-12in totals over Southern AK, 5-8in totals over Western CAN and 5-10in totals over the Mountains of Japan.

HEAVY RAIN: 3-5in over the N-Pacific.  
TROPICS: Tropical wave just west of Guam.

COLD: Temps in the -20s for N Alaska.

Large multiple storm systems sitting over the Gulf of Alaska will bring widespread heavy rains, heavy snows and very strong winds to the majority of the Northern Pacific and Bering Sea.

Drought

Excessive Cold

Tropical

Severe T-storms

Heavy Rain

Winds

Heavy Snow

Excessive Heat

Ice

Notes: Heavy rain is 2inches or greater.

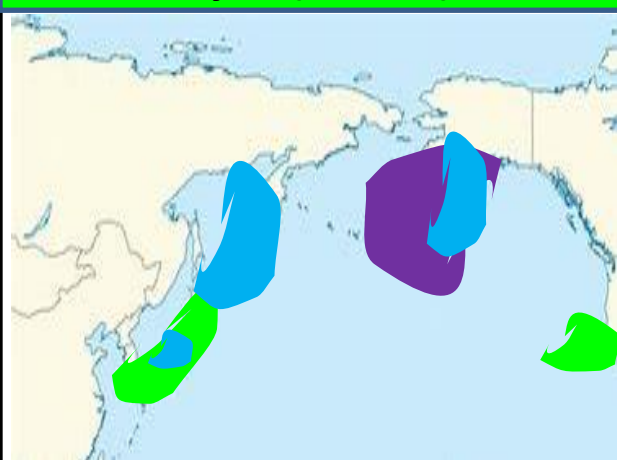
Heavy Snowfall is 6inches or greater.

Winds over 40mph sustained

Heat over 90F. Cold 0F and below.

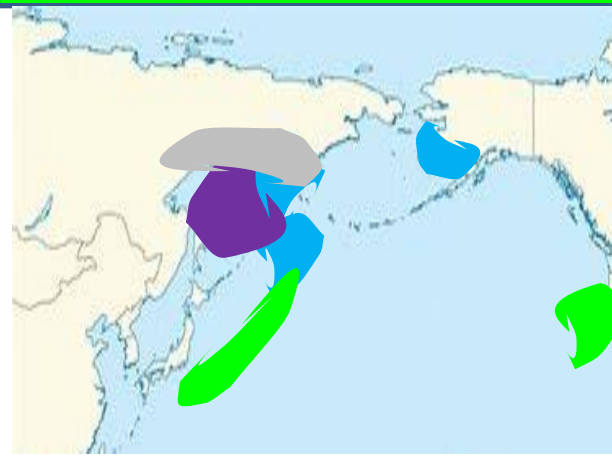
Ice: over .05inches

## Day 2: (Dec 18)



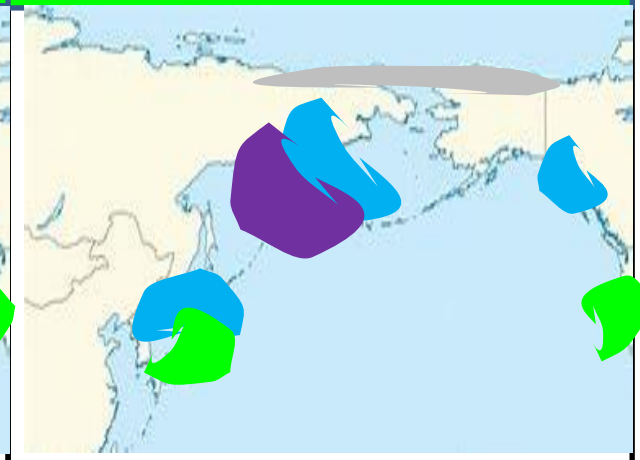
WINDS: 30-55mph over the Gulf of Alaska.  
 HEAVY SNOW: 5-10in totals over Northern Russia and North Japan, also 5-8in totals for the Japanese Alps.  
 HEAVY RAIN: 2-4in totals over Japan and 2-4in totals for the Western US.  
 HEAVY SNOW: 3-5in totals for parts of Western AK.

## Day 3: (Dec 19)



WINDS: 30-50mph over Northeast Russia.  
 HEAVY SNOW: 6-12in totals over Northeast Russia, 5-10in totals over the Kuril Islands and 3-6in totals over parts of Western AK.  
 HEAVY RAIN: 2-4in totals east of Japan, 2-5in totals into CAL.  
 COLD: Temps to fall into the 0-10below range over Northern Russia.

## Day 4: (Dec 20)



WINDS: 30-50mph over the Bering Sea.  
 HEAVY SNOW: 6-12in totals over Northern Japan and the Alps.  
 HEAVY SNOW: 5-12in totals over Northeast Russia and into SW AK.  
 HEAVY RAIN: 2-4in totals over parts of Japan and also into Southwest US.  
 COLD: Temps in the 0-10 below over Northern AK and Russia.

Drought

Excessive Cold

Tropical

Severe T-storms

Heavy Rain

Winds

Heavy Snow

Excessive Heat

Ice

Notes: Heavy rain is 2inches or greater.

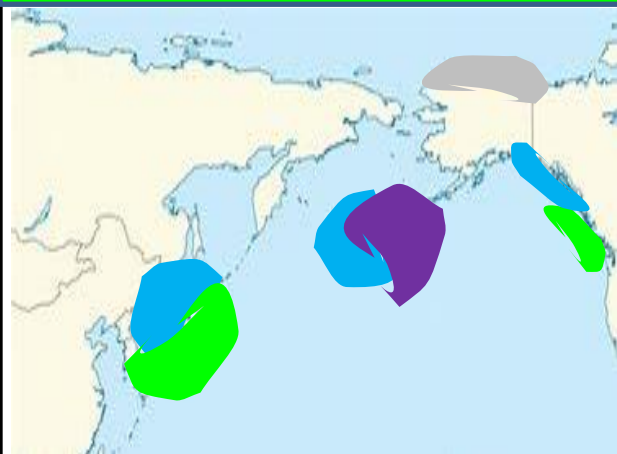
Heavy Snowfall is 6inches or greater.

Winds over 40mph sustained

Heat over 90F. Cold 0F and below.

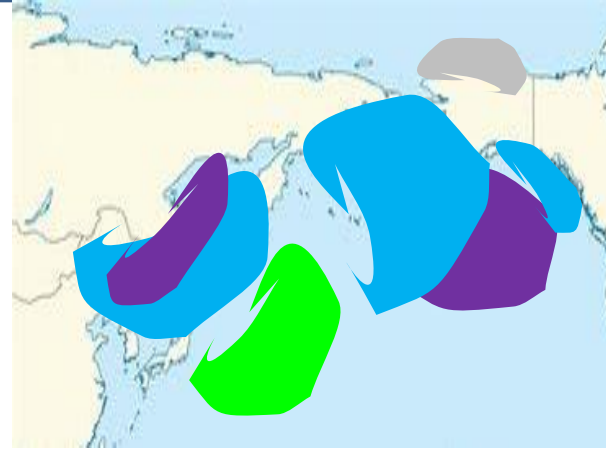
Ice: over .05inches

## Day 2: (Dec 21)



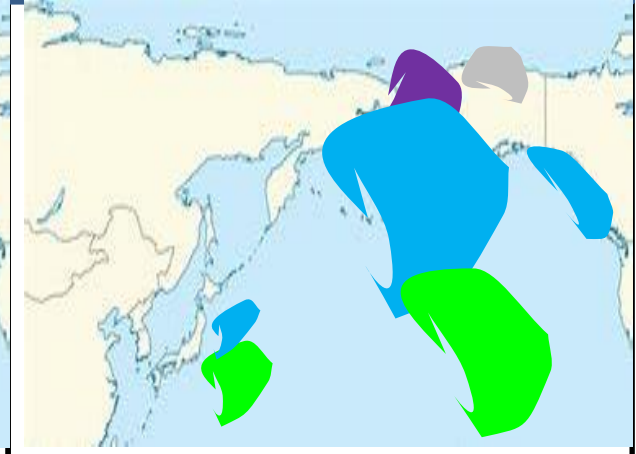
WINDS: 30-50mph over the Aleutians.  
HEAVY SNOW: 6-10in totals for the Aleutians and 10-12in totals over Western Japan, 5-8in totals over Western CAN.  
HEAVY RAIN: 2-4in totals for parts of Japan and the Northwest US.  
COLD: Temps in the -10 to -20F over Northern AK.

## Day 3: (Dec 22)



WINDS: 30-55mph over the Gulf of Alaska and and Northeast Russia.  
HEAVY SNOW: 5-12in totals for parts of Northern Japan and the Alps.  
6-10in totals over parts of the Gulf of Alaska.  
HEAVY RAIN: 2-5in totals near the dateline.  
COLD: Temps in the -20F range over the North Slope.

## Day 4: (Dec 23)



WINDS: 30-50mph over the Bering Sea.  
HEAVY SNOW: 10-14in totals over the Aleutian Islands, 8-12in totals over SE Alaska and 4-8in totals northeast of Japan.  
HEAVY RAIN: 3-7in totals east of Japan and 3-5in totals near Hawaii and to the North.  
COLD: -20F over the North Slope.